

**SIDF** Standards and Trade Development Facility

**Overview and Scope of One Health underpinning FAO, OIE, WHO work**

One Health Session,  
STDF Working Group,  
20-21 October 2016  
Geneva

Professor Alan Reilly  
Adjunct Professor  
Institute of Food and Health  
University College Dublin



---

---

---

---

---

---

---

---

**“One Health” what is it?**



---

---

---

---

---

---

---

---

**Food Safety Context**



---

---

---

---

---

---

---

---

### Farm to Fork – One Health

Feed Fertilizer Crop/Animal Production Storage Processing Transport Distribution Wholesale Retail Catering

SEAN REILLY

---

---

---

---

---

---

---

---

### Good Agricultural Practice- Environment

SEAN REILLY

---

---

---

---

---

---

---

---

### Plant Health.....

SEAN REILLY

---

---

---

---

---

---

---

---

### How Important Is Animal Welfare?



Very Important to Consumers!

SEAN REILLY

---

---

---

---

---

---

---

---

### Animal Health



Animal Health Problem – Fear in the Food Chain

SEAN REILLY

---

---

---

---


---

---

---

---

### Why Is Feed So Important?



...because everything WE eat – YOU eat!

Don't Forget the Water!

---

---

---

---

---

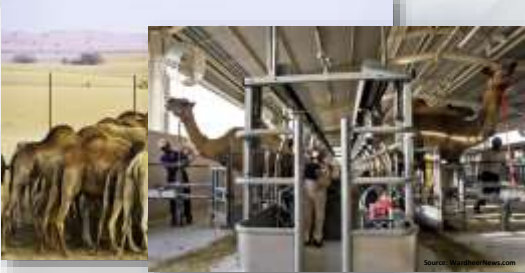
---

---

---

### Animal Feed – Key Quality Indicator

High Quality Safe Feed In...



High Quality Safe Food Out...

SEAN REILLY

---

---

---

---

---

---

---

---

### Animal Production



SEAN REILLY

---

---

---

---

---

---

---

---

### Food Processing – from here to....



SEAN REILLY

---

---

---

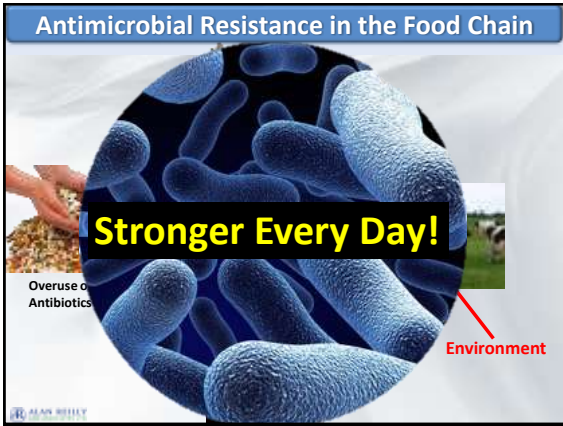
---

---

---

---

---



---

---

---

---

---

---

---

---



---

---

---

---

---

---

---

---



---

---

---

---

---

---

---

---



---

---

---

---

---

---

---

---



---

---

---

---

---

---

---

---



---

---

---

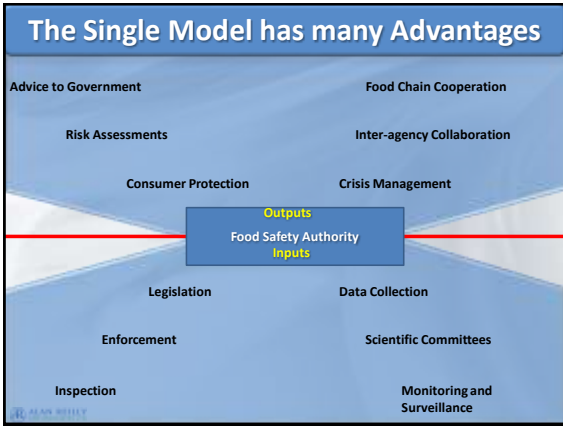
---

---

---

---

---




---

---

---

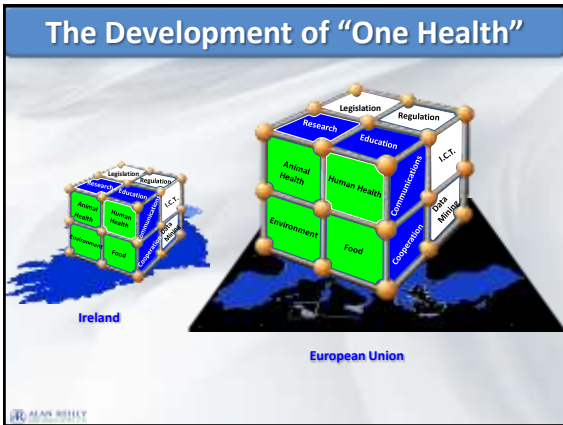
---

---

---

---

---




---

---

---

---

---

---

---

---




---

---

---

---

---

---

---

---

### "One Health" in Action in the EU

**ACTIVE THREATS**

The latest information about public health threats and changes in the knowledge of zoonotic and other diseases that may potentially affect Europe. All updates are reported weekly in the Communicable Disease Threats Report.

[Read more](#)

**DISEASE NETWORKS**

ECDC publishes surveillance data through disease-specific networks. See the list of all European surveillance networks that are now coordinated by ECDC.

[Read more](#)

---

---

---

---

---

---

---

---

---

---

---

---

### EU-wide Risk Assessment

**Assessing Risks associated with Food, Animal Feed, Animal Health and Welfare, and Plant Health**

---

---

---

---

---

---

---

---

---

---

---

---

### Examples of Working together



European Food Safety Authority



European Centre for Disease Prevention and Control

**SCIENTIFIC REPORT OF EFSA AND ECDC**  
The European Union Summary Report on Trends and Sources of Zoonoses, Zoonotic Agents and Foodborne Outbreaks in 2012

**SCIENTIFIC REPORT OF EFSA AND ECDC**  
The European Union Summary Report on Antimicrobial Resistance in zoonotic and indicator bacteria from Humans, Animals and Food in 2012

---

---

---

---

---

---

---

---

---


---

---

---



### EU Integrated Response



**12 - Point Action Plan**

- Appropriate use of antimicrobials in both humans and animals
- Improved monitoring and surveillance in human and animal medicine
- Strengthen surveillance systems on AMR and antimicrobial consumption in human/animal medicine

---

---

---

---

---

---

---

---

### Leading "One Health" in Asia



- One Health Committee
- ToR – Scope – Workplans
- Focus: Emerging Risk Analysis – Networking-Data Sharing

---

---

---

---

---

---

---

---

### National Systems – International Connections



---

---

---

---

---

---

---

---

### International Cooperation

---

---

---

---

---

---

---

---

---

---

---

---

### OIE One Health

---

---

---

---

---

---

---

---

---

---

---

---

### Conclusions?

- One Health widely discussed at regional and international meetings - high moral ground platforms
- Few examples of successful implementation of One Health at national/regional level
- Private sector/ multinationals pay lip service to the concept
- Conflicting Priorities between Sectors..

---

---

---

---

---

---

---

---

---

---

---

---

### One Health – the Future?

- A Peacetime Activity
- Working at the Interface
- Emerging Risk/Collection, Analysis, Sharing Data
- Protocol for Implementation
- Promotion at National Level
- Demonstrate Added Value/Win-Win

---

---

---

---

---

---

---

---

### Totally Interdependent

A diagram showing four interlocking gears. The top-left gear is orange and labeled 'Mankind'. The top-right gear is yellow and labeled 'Animals'. The bottom-left gear is red and labeled 'One Health'. The bottom-right gear is green and labeled 'Environment'. The gears are arranged in a diamond shape, with 'One Health' in the center. A small logo for 'JEAN REILLY' is visible in the bottom left corner.

---

---

---

---

---

---

---

---

The text 'THANK YOU!' is written in a large, bold, red font with a blue outline. It is centered within a yellow oval that has a purple border. The background is a light blue and white wavy pattern. A small logo for 'JEAN REILLY' is visible in the bottom left corner.

---

---

---

---

---

---

---

---