

A global partnership to facilitate safe trade

STDF MEL Framework and Results Matrix

STDF Working Group Meeting

13 October 2020



Starting point for the MEL Framework



Respond to recommendations in the 2019 External Evaluation of the STDF

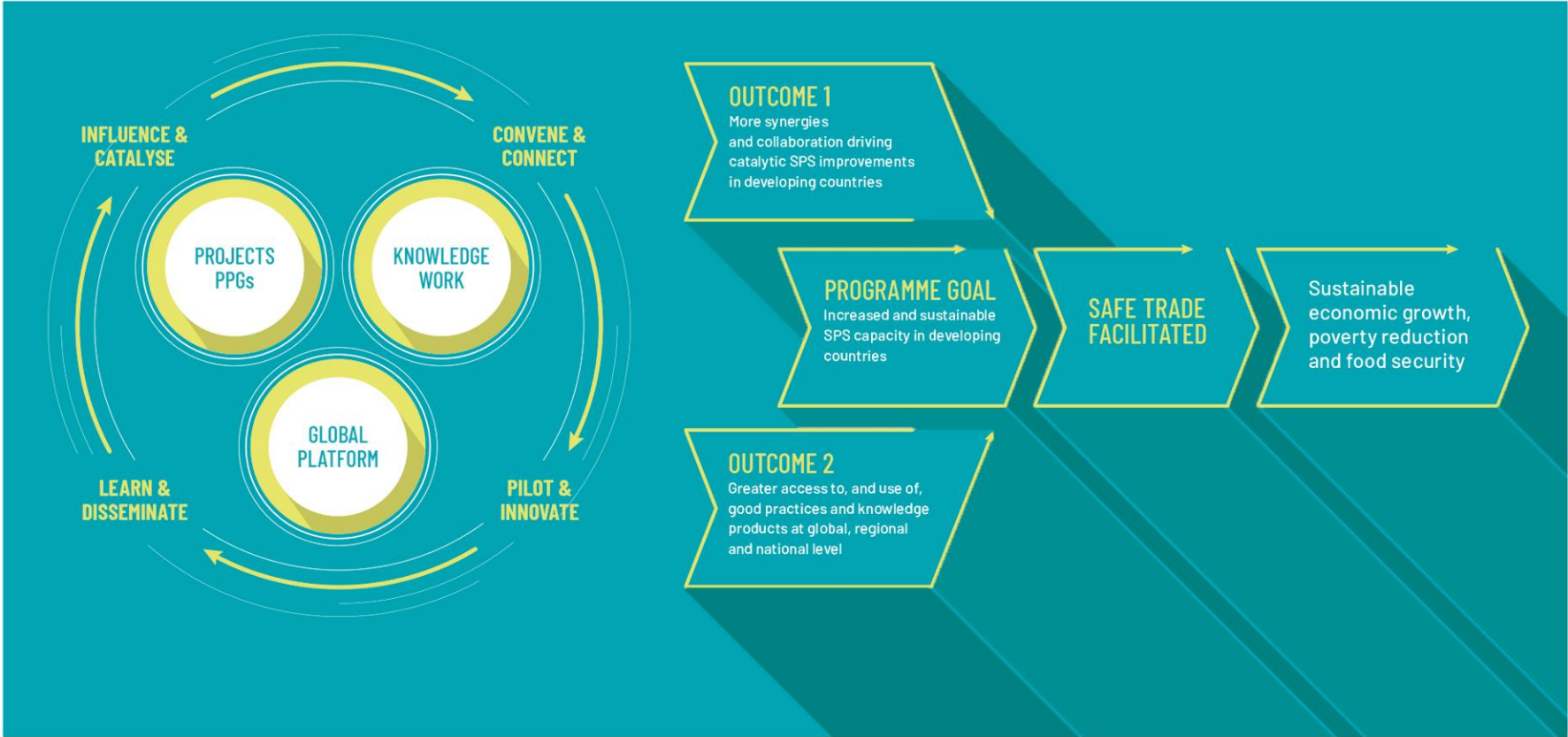
Build on STDF's Strategy for 2020-2024

Learn from previous M&E Framework

Adopt innovation

Ensure fit-for-purpose

STDF's theory of change



Process

- Creation of STDF MEL Group (with FAO, OIE, IPPC, Canada, UK/SITFA, ITC, Sanjay Dave)
- Collaborative work on MEL Framework and Results Matrix (June-Sep. 2020)
- Discussion of draft MEL Framework with interested WG members (24 Sep. 2020)
- Revise draft based on discussion and comments shared
- Distribute revised MEL Framework to Working Group in Oct. 2020

Key Components of MEL Framework

Purpose

- Ensure accountability
- Increase learning
- Improve operations

Audience

- STDF Working Group and Policy Committee
- Others involved in STDF's work including PG/PPG partners, current/future donors, other stakeholders in SPS capacity development and AFT, beneficiaries, STDF Secretariat

Context & Theory of Change

- Sets out the “problem”, the intervention logic and pathway to achieve change
- Flexible, evolving tool to be revisited, especially to promote learning

Results Matrix (including logframe)

- Detail to operationalize MEL : Indicators, data sources, sample, methods, responsibility, frequency, assumptions, risks, definitions
- Can be turned into more conventional log frames (based on donor specifications)

Key Components (continued)

Indicators

- Attribution rests at programme goal level
- Aim to trace contribution to higher-order impacts
- Balance between qualitative and quantitative indicators (encourage triangulation of data from multiple sources)
- Link programme level to project indicators (aggregation)
- Address gender equality and other aspects of inclusiveness
- Use of SDGs and industry standard indicators at higher-levels

Data sources and methods

- Existing data sources (where possible) to ease the burden, plus new sources
- Primary (improve existing surveys) and secondary data
- Existing and new data collection methods
- Shared responsibilities: STDF Secretariat, PG/PPG implementing partners, WG members

Key Components (continued)

Process and data management

- Monitoring, evaluation, learning
- Cloud-based platform for consistent, robust data collection and management
 - Data warehouse for programme data aggregation
 - Consistency in indicators with a few standard project indicators
 - Integrate and improve learning
 - Improve project management and financial reporting
 - Use off-the-shelf solution, tailored to STDF's needs
 - Pilot “sand-box” in collaboration with selected project implementing organizations and MEL Group

Key Components (continued)

Delivery and resources

Resources

- Human – STDF Secretariat, WG Members, PG/PPG implementing partners
- Financial – Request to WG to approve budget (US\$290,000) for companion MEL tool for Strategy period

Piloted roll-out (next steps)

- Results Matrix as a “living” tool to guide MEL
- Role of STDF MEL Group
- Procure, set-up and test “sand box” MEL Tool
- Ongoing dialogue with PG/PPG implementing partners
- Guidance and support to MEL within PGs/PPGs
- Role / expectations of WG members